

# Eastern Gray Squirrel



# ENGAGE

Has anyone ever seen a black squirrel in their community??? What type of environment did you see it in??



<https://squirrelmapper.org/>





# EXPLORE

*Will Climate Change Impact the  
Survivorship of One Morph over  
the Other???*



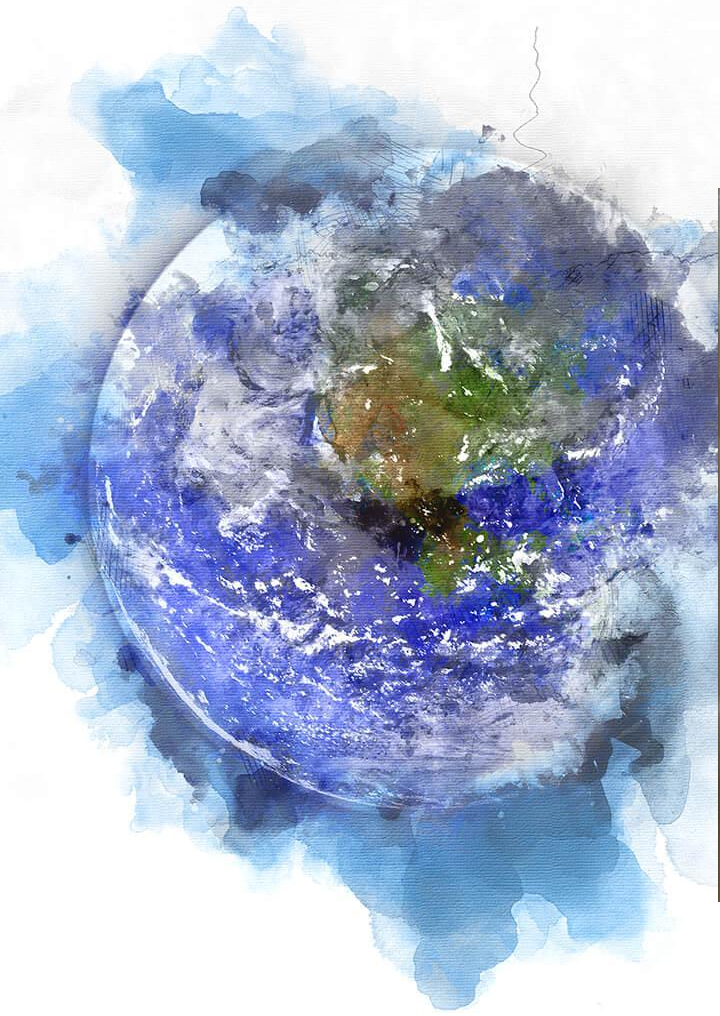
Let's learn more about our subject!



A watercolor illustration on the left side of the slide. It depicts a pair of hands, rendered in shades of brown and orange, cupping a mound of dark brown soil. A small green seedling with three leaves grows out of the soil. The background is a soft, abstract wash of light green and blue colors, suggesting a natural, outdoor setting.

## *Materials provided to learn more about the subjects*

- 3D Skull of the Eastern Gray Squirrel
- Actual skulls
- Study Skins of both morphs
- Book on history of Eastern Gray Squirrel
- Trail Cams





# Explain

Jess Proctor and Adam Parlin will zoom in with students to discuss their research and answer any questions students may have regarding the color morphs of the squirrels.

## Key Vocabulary:

- Morphology
- Urbanization
- Urban Islands
- Phenotype
- Melanism
- Gene Flow

# Elaborate

## **Environmental Science Class:**

**Students will answer the CER question and concentrate on geographical locations; urban versus rural and color morphs of squirrels.**

## **AP Biology Class: SUNY ESF Global Environment Class:**

**Students will answer the CER question as well as discuss possible modification humans may make to the landscape due to climate change.**

**Students will answer the CER question as well as discuss possible modification humans may make to the landscape due to climate change**





# Evaluate

CER Rubric/Poster

Presentations

Follow Up Questions





*Thanks!*

Any questions?

You can find me at:

[llowenberg@chittenangoschools.org](mailto:llowenberg@chittenangoschools.org)





## *Credits*

Special thanks to all the people who made and released these awesome resources:

- » Kara Vredenburgh
- » Jess Proctor
- » Adam Parlin